



Introducing... **VISOTHERM**

The new high-quality, high-performance Visotherm window and door ranges have been introduced to enhance Smart's established systems portfolio, with the range having been developed to provide optimal levels of thermal performance using double or triple glazed sealed units.

The system is the ideal choice for both new build and refurbishment commercial and residential projects, where optimum performance and outstanding thermal performance are specified.

Visotherm is manufactured by Smart in Britain and is available in a choice of standard and non-standard colours, with single and dual colour options including Smart's own Naturals, Sensations, Alchemy and Cotswold colour ranges.

DESIGNING PRODUCT SOLUTIONS FOR

- ✦ New Polyamide Thermal Break
Profiles feature new polyamide strips produced with the latest low lambda material
- ✦ Window options
Open-out, top-hung, side-hung and fixed casement
- ✦ Door options
Open-in or open-out single and double door options
- ✦ Suitable for residential and commercial applications
- ✦ Typical U-values from 1.3 W/m²K
(using 1.0 W/m²K centre panel)
- ✦ PAS 24:2016 specification as standard
- ✦ British Standard Kitemark
- ✦ Low maintenance

FIXED



TOP HUNG



SIDE HUNG

Visotherm WINDOWS

The Visotherm window range not only delivers elegant aesthetics, but also long-life, low-maintenance and high performance. The system can be fabricated as open-out, top-hung or side-hung casement windows, as well as fixed lights and is available with a complementary range of hardware options.

The window's thermally broken profiles provide strength, security and durability to deliver outstanding performance and feature new polyamide strips produced with the latest low lambda material, which provides significantly lower thermal conductivity than regular polyamide.

FEATURES AND SPECIFICATIONS

- ◆ Building Regulations Compliant
- ◆ 1.3 W/m²K (1.0 W/m²K centre panel)
- ◆ A W.E.R.
System can achieve an 'A' Window energy rating
- ◆ Wide Range of Hardware
Including 316 Marine Grade stainless steel and hardware painted to order
- ◆ Thermally efficient
Profiles feature an extended low lambda polyamide thermal break for optimum thermal performance
- ◆ Crimped Corners
Fabrication is by method of crimped corners
- ◆ Single or Dual Colour
Choose from our unrivaled range of colours



*Results show best result possible dependant on specification.

Visotherm DOORS

Visotherm doors are a perfect complement to the window range. Available as single or double doors, with open-in and open-out options, the system provides excellent thermal and weather performance. The doors are also available with an extensive selection of colour, glazing and hardware options to provide the perfect finishing touches.

With PAS 24:2016 accreditation as standard, Visotherm doors' security options include a choice of key wind, lift lever or slam lock multipoint locks to provide a lifetime of assured security.

FEATURES AND SPECIFICATIONS

- ◆ Building Regulations Compliant
- ◆ Available as Open-in or Open-out, Single or Double Doors
- ◆ PAS 24:2016 Approved
Enhanced security for aluminium doors
- ◆ Security
Choice of key wind, lift lever or slam lock multipoint locks
- ◆ Thermally Efficient
Profiles feature an enhanced, low lambda polyamide thermal break for optimum thermal performance
- ◆ $1.3 \text{ W/m}^2\text{K}$ ($1.0 \text{ W/m}^2\text{K}$ centre panel)
- ◆ Single or Dual Colour
Choose from our unrivaled range of colours
- ◆ Wide Range of Hardware
Including 316 Marine Grade stainless steel and hardware painted to order



*Results show best result possible dependant on specification.





VISOTHERM WINDOWS

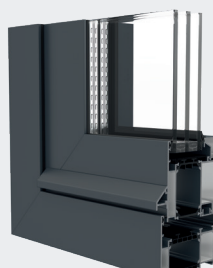
VISOTHERM DOORS



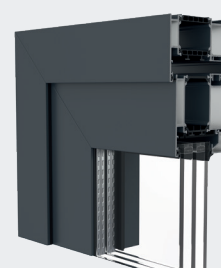
FIXED WINDOW



CASEMENT WINDOW



DOOR THRESHOLD



DOOR FRAME HEAD

Window Type	Maximum Width (mm)	Maximum Height (mm)	Frame Depth (mm)	Maximum Perimeter (mm)	Glazing Units	Security Standard	Typical U Value ¹	WER ²	Air Permeability Classification	Water Tightness Classification	Resistance to Wind Classification
Sash dimensions for windows with approved sash profiles:											
Side Hung	840	1440	70	–	24, 28, 32	PAS 24:2016	1.3 W/m ² K	Band A	Class 4	E1050	AE2400
Top Hung	1440	2500	70	–	24, 28, 32	PAS 24:2016	1.3 W/m ² K	Band A	Class 3	8A	2000+
Fixed	2100	2100	70	42	24, 28, 32	PAS 24:2016	1.3 W/m ² K	Band A	Class 3	E1050	AE2000
Tilt/Turns	1600	2400	70	42	24, 28, 32	PAS 24:2016	1.3 W/m ² K	Band A	Class 4	E900	AE2400

(For sizes outside these parameters, contact the Smart Technical Support team)

Typical Values different glass, profiles and door configurations will vary U Value and Window Energy Rating

1. U Value based on opener next to fixed 1230 x 1480 using glass Centre Pane 1.0

2. WER based on opener next to fixed 1230 x 1480 using glass Centre Pane 1.2 and g value 0.74

Door Type	Maximum Width (mm)	Maximum Height (mm)	Frame Depth (mm)	Glazing Units	Security Standard	Typical U Value ¹	DSER ³	Air Permeability Classification	Water Tightness Classification	Resistance to Wind Classification
Sash dimensions for windows with approved sash profiles:										
Single Door Open In	1200	2500	70	24, 28, 32, 36 & 40	PAS 24:2016	1.3W/m ² K 1.2 W/m ² K (w/ Designer Panel)	Band B	Test Pending	Test Pending	Test Pending
Single Door Open Out	1200	2500	70	24, 28, 32, 36 & 40	PAS 24:2016	1.4W/m ² K 1.2 W/m ² K (w/ Designer Panel)	Band B	Test Pending	Test Pending	Test Pending

(For sizes outside these parameters, contact the Smart Technical Support team)

3. U Value and Door Set Energy Rating for single door based on 1230 x 2180 using glass Centre Pane 1.0

3. U Value for double door based on 2000 x 2180 using glass Centre Pane 1.0

3. Door Set Energy Rating for double doors based on 2000 x 2180 using glass Centre Pane 1.2 and g value 0.7